



Rabbit anti SMN (Survival of motor neuron) Polyclonal Antibody

Alternative Name(s): survival of motor neuron 1; SMN

Order Information

- **Description:** SMN (Survival of motor neuron)
- **Catalogue:** 601-720
- **Lot:** See label
- **Size:** 100ug/200ul
- **Host:** Rabbit
- **Clone:** nan
- **Application:** IHC(P), WB
- **Reactivity:** Hu

ANTIGEN PREPARATION

A synthetic peptide corresponding to C-terminus of human SMN.

BACKGROUND

The survival motor neuron (SMN) protein is the protein product of the spinal muscular atrophy (SMA) disease. SMN gene is the SMA determining gene. In humans, there are two nearly identical copies of the survival of motor neuron genes (SMN1 and SMN2), whereas other eukaryotic species have only one copy of the SMN gene. SMN is expressed ubiquitously and is a core component of a self-assembling multiprotein complex. The SMN complex, consisting of SMN and Gemin proteins (Gemin2, -3, -4, -5, -6, -7 and -8), in which SMN-Gemin2 complex plays an essential role in the assembly and regeneration of small nuclear ribonucleoproteins (snRNPs) and spliceosomes.

PURIFICATION

The Rabbit IgG is purified by Epitope Affinity Purification

FORMULATION

This affinity purified antibody is supplied in sterile Phosphatebuffered saline (pH7.2) containing antibody stabilizer

SPECIFICITY

This antibody recognizes ~35 kDa of human SMN protein. The other species are not tested

STORAGE

The antibodies are stable for 24 months from date of receipt when stored at -20oC to -70oC. The antibodies can be stored at 2oC-8oC for three month without detectable loss of activity. Avoid repeated freezing-thawing cycles.

APPLICATIONS/SUGGESTED WORKING DILUTIONS*

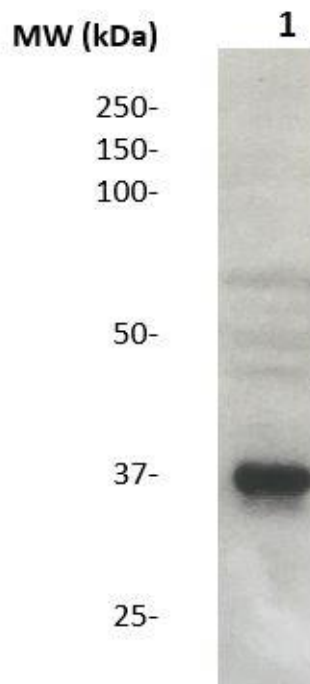
- Western Blot: 0.1-1 µg/ml
- ELISA: 0.01-0.1 µg/ml
- Immunoprecipitation: 2-5 µg/ml
- IHC: 2-10 µg/ml
- Flow cytometry: Not tested
- Molecular Weight: 35.0
- Positive Control: Kidney Tissue
- Cellular Location: Cell Membrane

*Optimal dilutions should be determined by researchers for the specific applications.

FOR RESEARCH USE ONLY.

AbboMax, Inc 2528 Qume Drive, Suite 8, San Jose, California 95131, USA
1 408-573-1898 (Tel). 1 408-573-1858 (Fax). www.abbomax.com info@abbomax.com

DATA ATTACHMENTS



Western Blot: The cell lysate derived from HELA was immunoprobed by Rabbit anti-SMN (Cat#601-720) at 1:500. An immunoreactive band is observed around ~35 kDa.

REFERENCES

FOR RESEARCH USE ONLY.